



## **Münchner Künstlerhaus**

**Conferences – Seminars – Conventions – Weddings – Birthdays  
Concerts – Lectures – Exhibitions**

**Catering: Restaurant Künstlerhaus, Kern & Springer GmbH**

Event Office

Ms. Silke Haas, Ms. Jana Heidtmann, Mr. P. Paul Roche  
Apprentices: Ms. Katharina Gatto, Mr. Bruno Bertsch

Management: President Maja Grassinger

---

### **Directions**

#### **Car**

Follow the signs „Stadtmitte“ (city centre)

Parking facilities in close proximity:

- *Vinci Park Garage im Oberpollinger, Maxburgstraße, open 24/7; exit-tickets at discounted rates can be obtained from our event office;*

#### **Train**

Arriving at Munich Central Station (Hauptbahnhof) take any S-Bahn or Underground (U-Bahn) 4 und 5 and get off the train at *Karlsplatz (Stachus)*.

#### **Air**

Arriving at Munich Airport take S-Bahn 8 or S-Bahn 1 and get off the train at *Karlsplatz (Stachus)*.



### **Münchner Künstlerhaus**

Lenbachplatz 8

80333 Munich

Germany

Tel: +49 (0)89 - 59 91 84 - 0

Fax: +49 (0)89 - 59 91 84 - 10

E-Mail: [info@kuenstlerhaus-muc.de](mailto:info@kuenstlerhaus-muc.de)

[www.kuenstlerhaus-muc.de](http://www.kuenstlerhaus-muc.de)

# Münchener Künstlerhaus

## About us

The Münchener Künstlerhaus was conceived as a meeting place for artists and society alike and is still living proof of the style and society model of its time of origin. Not only the historical building itself but also its culture of festivities has become a vital part of the history of Munich. Admittedly, German is a tricky language sometimes and literally translated it is the "Munich House of Artists" and easier to pronounce for non-Germans.

In 1893 prince regent Luitpold has laid the foundation stone of the building designed by architect Gabriel von Seidl and in 1900 Luitpold opened the house to the public in person. Thus he turned a dream of those artists from Munich being united in the "Allotria Artist Society" into reality: to bring together the patricians, the well-to-do brewery families and new industrialists in one place to meet the artists of the time: Franz von Lenbach, Fritz August Kaulbach and Franz von Stuck had been well known hosts for and creators behind countless exciting events.

Following glorious decades of festivities, masked balls and banquets the house burned down following a bombing raid on Munich on July 14, 1944. After the war US troops impounded the building, returning its operation to the House of Artists Association in 1954. Following the reconstruction led by Professor Erwin Schleich, the Munich House of Artists was re-opened to the public by Duke Albrecht of Bavaria on October 1, 1961. Over the first three decades economic problems - induced by the reconstruction financing - prevailed and limited the participation of the Munich House of Artists in the cultural life of the city. Peter Grassinger and his wife Maja took over the management and, after a thorough renovation, re-opened in 1998.

Public perceptions of art and society have changed dramatically after more than a century. Hence the development and management of the House of Artists changed as well and a different relationship between artist and society evolved. Bearing the banner - "Nobis et Amicis" ("for ourselves and our friends") on the outside of the building in mind - the House of Artists has broadened its approach and appeal. In the founding years access was restricted to the elite of artists and patrons. Today its wide variety of congresses, festivities, and exhibitions attracts citizens of Munich from all walks of life to mingle with politicians, scientists and artists. At present the management tailors a rich and colourful cultural programme in cooperation with over 50 cultural associations and institutions, resulting in a multitude of different themes. To ensure the special concept of the House of Artists in the future, its operation was changed into the House of Artists Foundation (Münchener Künstlerhaus Stiftung) in 2001. In cooperation with the House of Artists Association the foundation fulfils its multiple duties without public subsidies. Membership fees and income from renting out rooms for private festivities constitute the financial backbone of the House of Artists. Our premises are being used by public and private entities, for cultural events as well as congresses, receptions and smaller parties.

**Please fax back to the Event Office**

**Nr: +49 89 59 91 84 - 10**

---



## Planning Request

Contact person: \_\_\_\_\_

Company: \_\_\_\_\_

Telephone: \_\_\_\_\_

Fax: \_\_\_\_\_

E-mail: \_\_\_\_\_

Street: \_\_\_\_\_

Zip / Town \_\_\_\_\_

**Date of the event:** \_\_\_\_\_

Kind of event: \_\_\_\_\_

Beginning at: \_\_\_\_\_

Ending at: \_\_\_\_\_

Persons: \_\_\_\_\_

Seating: \_\_\_\_\_

Preferred room/s \_\_\_\_\_

### Technical equipment:

OHP

Screen

Slide projector

Beamer

Flipchart (incl. paper and coloured pens)

Pinboard

Lectern with/without microphone

Microphone

other technical equipment: \_\_\_\_\_

### The room should be equipped with:

Rostrum/stage

Board of directors table

Registrationdesk

Wardrobe in the room

Cloakroom with service

Flower arrangement for the lectern  ....for the tables

### Catering request:

Soft drinks

Welcome-coffee-buffet

Coffee break

Seated lunch

Finger food

Buffet

Menue

### Further wishes:

\_\_\_\_\_  
\_\_\_\_\_  
\_\_\_\_\_

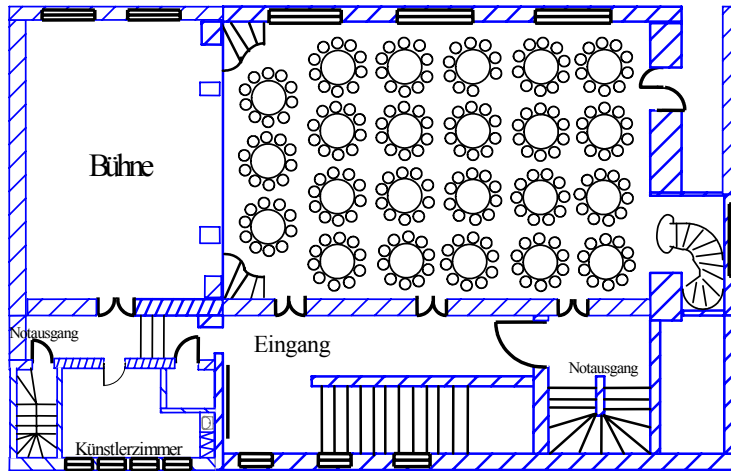
Please send us a non-binding offer with option confirmation

Please send us the reservation contract

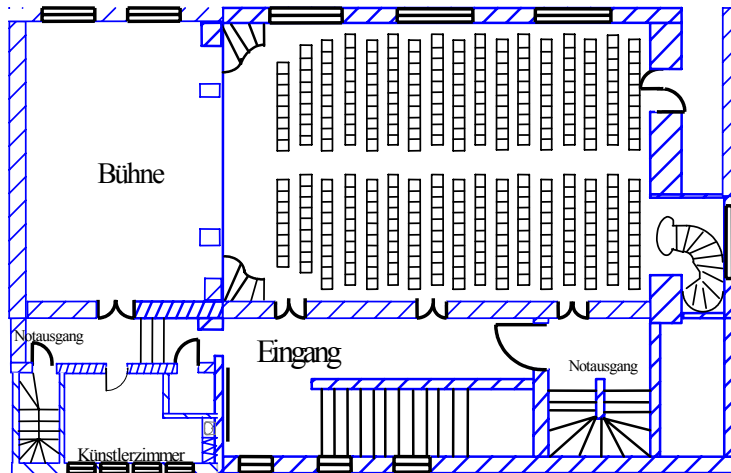
If you have any further questions, please do not hesitate to contact us at any time.

Tel: +49 89 599 184 0

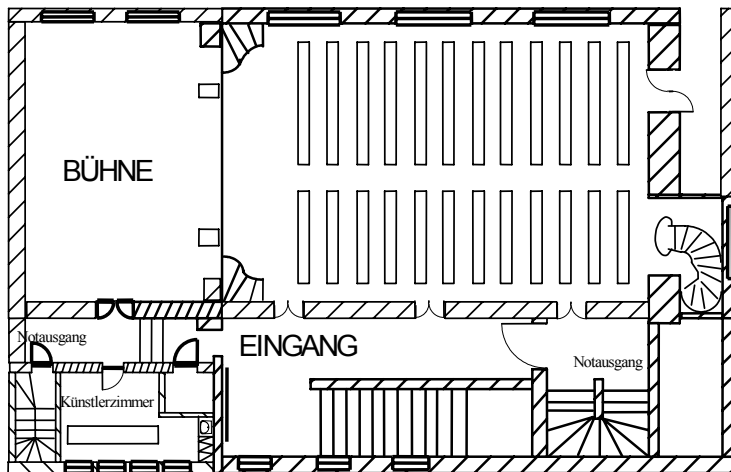
### Hall (Festsaal)



Roundtable seating max. 230 pax

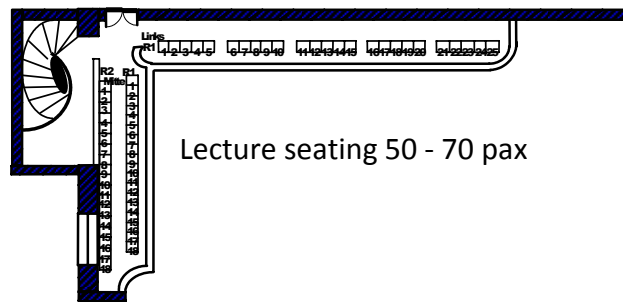
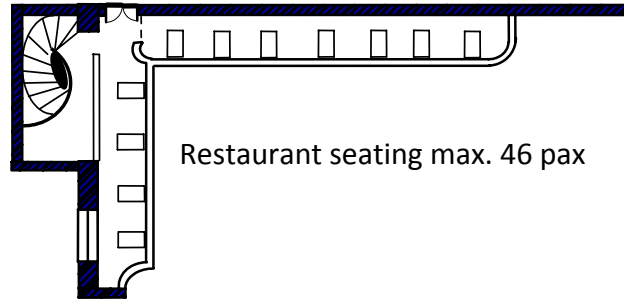


Lecture seating max. 334 pax

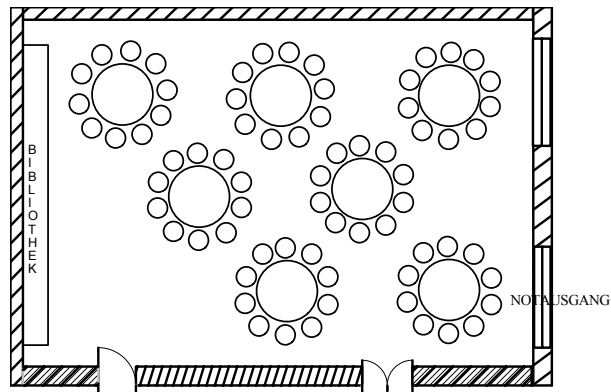


Conference seating max. 192 pax

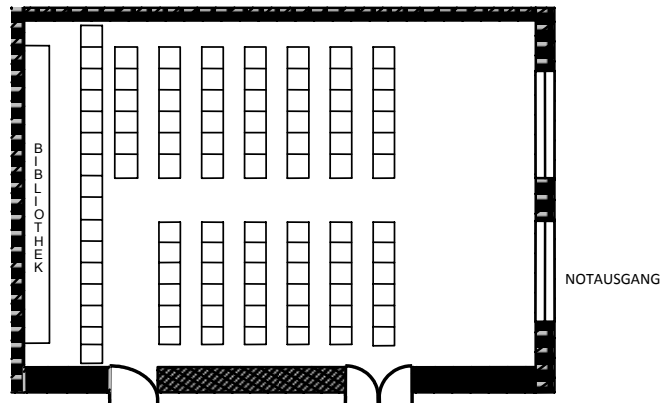
## GALLERY (HALL)



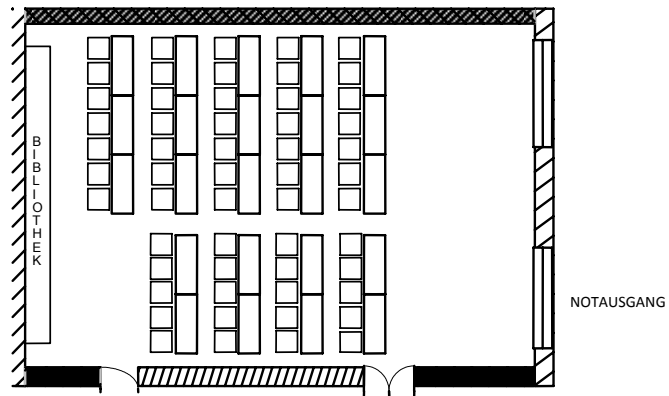
## MILLER ROOM



Roundtable seating max. 70 pax

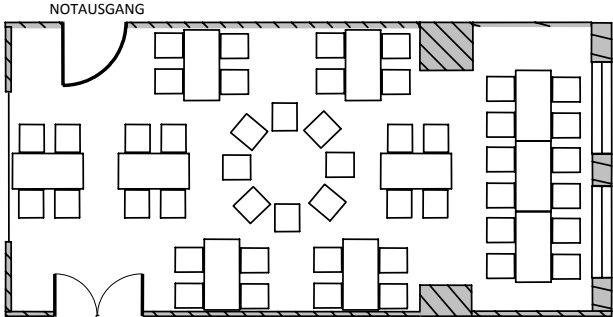


Lecture seating max. 96 pax

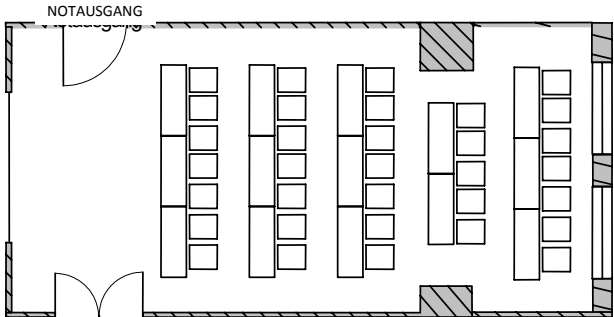


Conference seating max. 55 pax

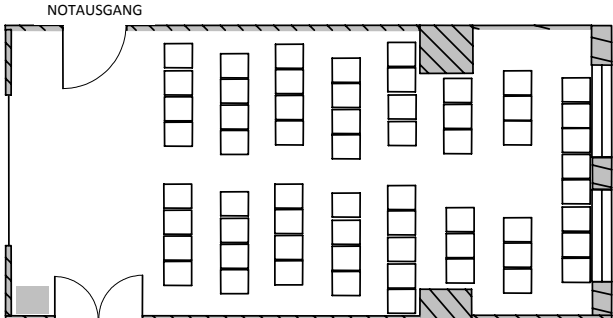
# LENBACH ROOM



Restaurant seating max. 50 pax

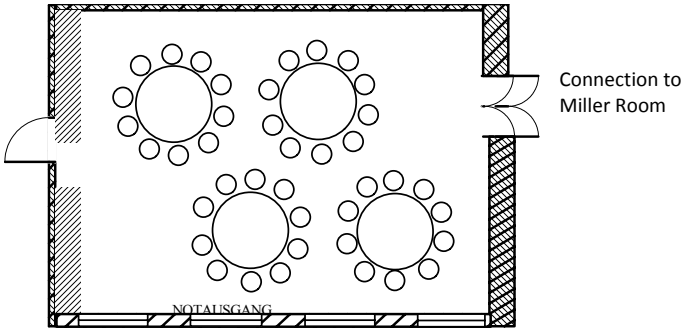


Conference seating max. 33 pax

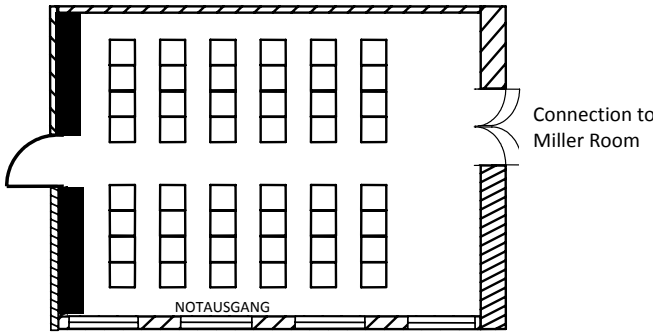


Lecture seating max. 57 pax

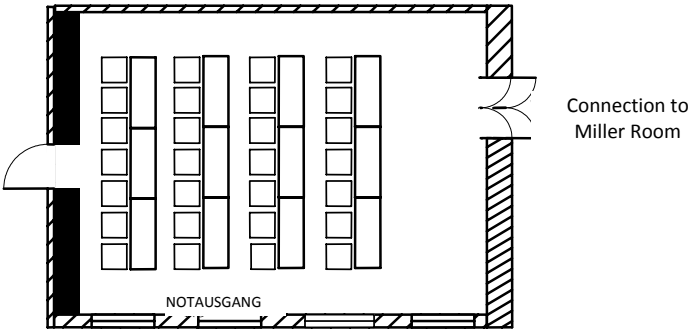
# SEIDL ROOM



Roundtable max. 40 pax

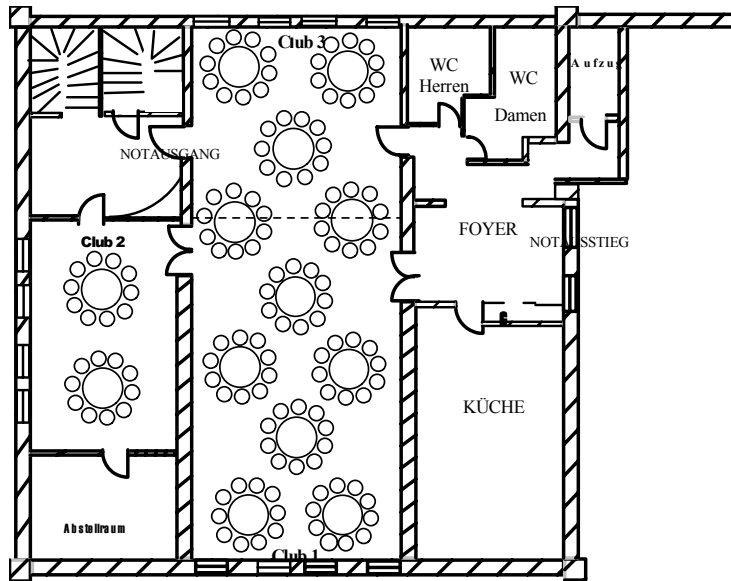


Lecture seating max. 48 pax



Conference seating max. 28 pax

# CLUB

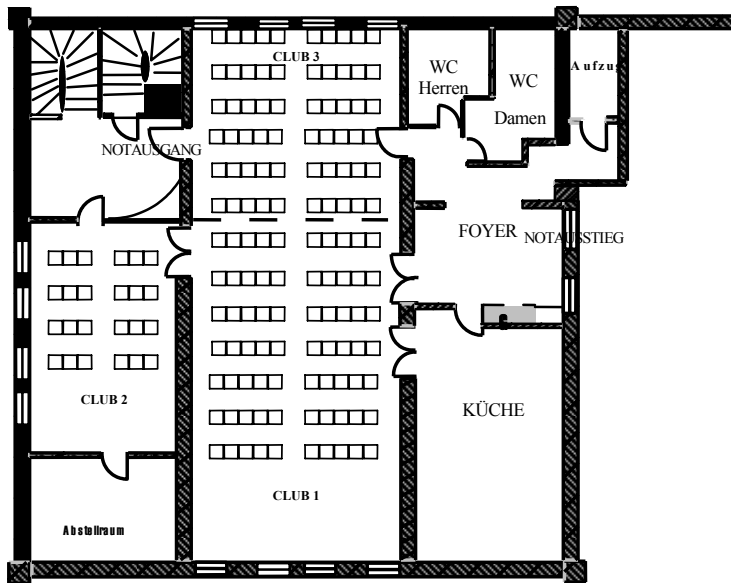


Roundtable seating

Club 1 max. 60 pax Club 1 & 3 max. 110 pax

Club 2 max. 20 pax

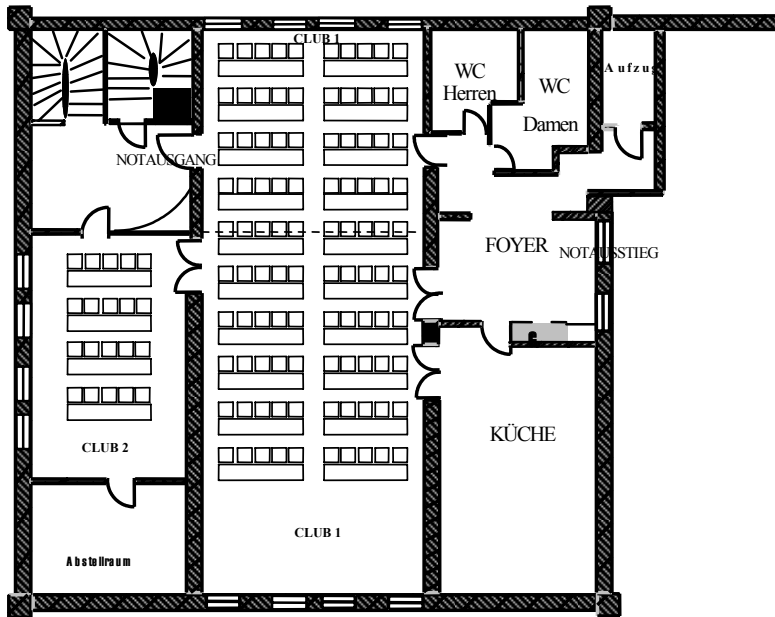
Club 3 max. 40 pax



Lecture seating

Club 1 & 3 max. 130 pax

Club 2 max. 24 pax



Conference seating  
 Club 1 & 3 max. 100 pax  
 Club 2 max. 20 pax

## RENTAL CHARGES

All prices are **INCLUSIVE** 19% German VAT and valid from 01.01.2010 onwards.

| Room                                        | m <sup>2</sup> | Rent                                    |                   |
|---------------------------------------------|----------------|-----------------------------------------|-------------------|
|                                             |                | 08:00 – 15:00 Uhr<br>17:00 – 24 .00 Uhr | 08:00 – 24:00 Uhr |
| Haal- Festsaal (w/o stage/ gallery)         | 247            | € 1.700,-                               | € 2.600,-         |
| Haal - Festsaal (with stage/ gallery)       | 418            | € 1.980,-                               | € 2.760,-         |
| Miller Room                                 | 101            | € 510,-                                 | € 780,-           |
| Lenbach Room                                | 73             | € 420,-                                 | € 640,-           |
| Seidl Room                                  | 53             | € 340,-                                 | € 520,-           |
| Miller- & Lenbach- & Seidl Room             |                | € 1.200,-                               | € 1.900,-         |
| Club Room 1                                 | 91             | € 480,-                                 | € 680,-           |
| Club Room 2                                 | 48             | € 210,-                                 | € 320,-           |
| Club Room 3                                 | 55             | € 310,-                                 | € 510,-           |
| Club Rooms 1 & 3                            | 146            | € 740,-                                 | € 1.180,-         |
| Club 1 & 2 & 3                              | 194            | € 890,-                                 | € 1.400,-         |
| Entire house (H, MR, SR, LR, Club & Foyers) |                | € 3.870,-                               | € 5.700,-         |

Rental charges include seating, cleaning (before and after the event) and basic lighting. For further arrangements the following fees apply:

### Supplementary Charges

|                                                                           |                               |
|---------------------------------------------------------------------------|-------------------------------|
| Extension of closing time for events from von 24:00 hrs– 02:00 hrs        | € 65,- (per hour)             |
| Extension of closing time for events from 02:00 hrs to max. 05:00 hrs     | € 240,- (per hour)            |
| Attended wardrobe                                                         | € 24,- (per person/ per hour) |
| Lavatory attendant                                                        | € 24,- (per person/ per hour) |
| Janitor (kindly give prior notice if needed during set-up or dismantling) | € 26,- (per hour)             |
| Extraordinary expenditures not included in rental charges                 | € 26,- (per hour)             |
| Extraordinary expenditures for cleaning not included in rental charges    | € 26,- (per hour)             |

Special technical equipment and conference technology such as systems for simultaneous translation, beamers, microports, etc. can be supplied via our in-house partner *Artist Studio Lang*. As a first reference kindly have a look at the attached price list provided by *Artist Studio Lang*.

Catering within our premises is exclusively supplied by our *Künstlerhaus Restaurant - Kern & Springer GmbH*. We gladly pass on your inquiry. As a first reference kindly have a look into our "food and beverage" section.

In case you need floral table decoration or more elaborate decoration for your event, we are more than happy to assist you. For special requirements you can also draw from our florist's expertise Ms. Rita Roth, Tel: +49 (0)89 - 48 41 11. [www.deko-roth.de](http://www.deko-roth.de)

You want a photographer to accompany your event? We can recommend our long-term partner Ms. Irmig Gessner. [www.fotoreport-irmi-gessner.de](http://www.fotoreport-irmi-gessner.de)

If you require filming of your event, we may suggest getting in touch with *Rüdiger Lorenz Filmproduktion*. [www.ruediger-lorenz-filmproduktion.de](http://www.ruediger-lorenz-filmproduktion.de)

## PRICE LIST – TECHNICAL EQUIPMENT

All prices are **INCLUSIVE** 19% German VAT and valid from 01.01.2010 onwards.

*per day / unit*

|                                                                                                                   |                              |
|-------------------------------------------------------------------------------------------------------------------|------------------------------|
| Grand piano / Steinway B (Hall only)                                                                              | € 400,-                      |
| Grand piano / Blüthner                                                                                            | € 250,-                      |
| Piano                                                                                                             | € 100,-                      |
| Tuning for Steinway B, Blüthner or piano                                                                          | € 105,-                      |
| P.A. system incl. 1 microphone                                                                                    | € 55,-                       |
| Each additional cable microphone                                                                                  | € 20,-                       |
| Each additional wireless microphone                                                                               | € 50,-                       |
| Ramp lights (Hall)<br>2 lighting settings possible (both dimmable)                                                | € 40,-                       |
| Each additional spotlight (Hall)<br>8 spotlights on stage, 2 on the gallery (all dimmable)                        | € 20,-                       |
| Outside lighting in the courtyard<br>4 x Fresnel lantern (Major, 1000 watt)                                       | € 35,-                       |
| CD player or Cassette recorder in the Hall together with 4 speakers                                               | € 50,-                       |
| CD player or Cassette recorder in Miller or Club Room together with 4 speakers                                    | € 30,-                       |
| Overhead projectors<br>2 x Liesegang trainer deluxe 400 (Type 640, Mediem 1636) fine and medium transparency pens | € 35,-                       |
| Slide projector<br>Leica Pradovit P300 IR, Rollei Rolleivision 66 dual, with 4 piece cartridge holder             | € 35,-                       |
| Video recorder (VHS) or DVD-Player<br>with monitor 80cm including a television tower, 160cm high                  | € 80,-                       |
| Laserpointer                                                                                                      | € 5,-                        |
| Telephone connection, per unit                                                                                    | € 0,30                       |
| T-DSL 16.000 High speed Internet Connection incl. 1 GB transfer<br>(1 available, 9 PC's can be connected)         | € 15,-                       |
| Fax machine                                                                                                       | per page in our office € 1,- |
| Copy machine                                                                                                      | per page € 0,20              |
| Flipchart<br>including squared paper and pens (red, black, blue, green)                                           | € 22,-                       |
| Lectern<br>3 lecterns available with 1 pedestal each (2 with light)                                               | € 16,-                       |
| Projection table<br>3 tables, 107cm high                                                                          | € 5,-                        |

|                                                                                    |                           |                   |
|------------------------------------------------------------------------------------|---------------------------|-------------------|
| Large screen<br>300cm x 600cm (fixed to the stage in the Hall)                     |                           | € 60,-            |
| Medium screen<br>300cm x 300cm (fixed to the ceiling in the Miller- & Club 1 Room) |                           | € 50,-            |
| Small screen<br>175cm x 180cm (can be put up in any room)                          |                           | € 20,-            |
| Rostrum 1m x 2m (40cm high)<br>6 x with wooden finish, 6 x with lino finish        |                           | € 26,-            |
| Notice board, 170cm x 200cm                                                        |                           | € 10,-            |
| Partition wall<br>30 partition walls available, some only standing when connected  |                           | € 10,-            |
| High Voltage Line                                                                  |                           |                   |
| Outside area                                                                       | 1 x 16A, 1 x 32A          |                   |
| Seidl Room                                                                         | 1 x 32A                   | each line         |
| Hall / Stage                                                                       | 1 x 16A, 1 x 32A, 1 x 63A | € 35,-            |
| Hall / Gallery                                                                     | 2 x 32A                   |                   |
| Cellar                                                                             | 1 x 32A                   |                   |
| Spotlights provided by the event organiser                                         |                           | per unit<br>€ 5,- |
| Shipment ramp for the entrance steps of the house                                  |                           | € 26,-            |
| Waste disposal charge per m <sup>3</sup>                                           |                           | € 52,-            |



**Artist Studio im Künstlerhaus**

**LPM Musikverlag Peter Lang**

Lenbachplatz 8 D-80333 München

Tel.: (089) 52 49 56 Fax: (089) 52 97 42

E-Mail: Peter.Lang@Artist-Studio.de

www.Artist-Studio.de

**Leihgeräten - Preisliste. Gültig ab 01.10.2010**

**Ihr Partner für CD / Video / Multimedia**

| <b>BEZEICHNUNG</b>                                                                          | <b>Tagespreis</b> |
|---------------------------------------------------------------------------------------------|-------------------|
| Ansteck- Hand- Headset Funkmikrofon UHF + Batterie                                          | 56,00 €           |
| Kabelmikrofon mit Boden- / Tischstativ (Gesangsmikro Shure & Sennheiser)                    | 20,00 €           |
| Beamer 1400 Ansi Lumen + 10m VGA-Kabel                                                      | 85,00 €           |
| Beamer 3000 Ansi Lumen + 15m VGA-Kabel                                                      | 178,00 €          |
| Beamer 5200 Ansi Lumen + 20m VGA-Kabel                                                      | 295,00 €          |
| Flachbild-Plasma-Fernsehen 125 cm / 50" (Keine extra-Transportkosten)                       | 125,00 €          |
| Rollstativ für Flachbild Plasma-Fernsehen 125 cm / 50"                                      | 25,00 €           |
| Leinwand freistehend 1,95 x 2,00 m                                                          | 20,00 €           |
| Leinwand freistehend, Front- oder Rückprojektion 3,05 x 2,28 m                              | 115,00 €          |
| CD, -DVD, - MD, - MP3 Player, DI-Box Stereo, VGA Splitter, 19" Flachbildschirm              | 18,00 €           |
| Digitalrecorder für Stereo-Livemitschnitt Wav- oder MP3 mit Zubehör                         | 45,00 €           |
| Laptop mit DVD Brenner, Office 07 / Powerpoint 07                                           | 49,00 €           |
| Powerpoint Funk-Remote mit Laser                                                            | 10,00 €           |
| Disco-Minianlage im Kofferformat / Mischer, 2x CD/MP3 Player, 1 Mikrofon, Kopfhörer         | 45,00 €           |
| Disco Doppel-CD Player / Frontloader professional mit Antishock in Flight Case              | 48,00 €           |
| Disco CD Player professional mit Antishock in Flight Case                                   | 48,00 €           |
| Disco Plattenspieler professional mit Rückwärtslauf, Beatcounter u.s.w.                     | 22,00 €           |
| Disco Mischer Professional mit Beatcounter u.s.w.                                           | 29,00 €           |
| Beschallungsanlage für Konferenz bis 150 Pers. / 2 Aktivboxen, 4 Mikro in, 4 Ster.- Line In | 120,00 €          |
| Basswoofer 300 W aktiv                                                                      | 39,00 €           |
| Mischpult 16 Mikrofonkanal, Mackie 16/4/2                                                   | 45,00 €           |
| Disco-Boxen Top & Bass 2 x 650 W mit Endstufe / Aktivweiche / Paarpreis                     | 195,00 €          |
| Effektgeräte / Delay, Digitalhall, Kompressor, Eq, Denoiser, Feedback Destroyer             | 18,00 €           |
| Bodenmonitor 150 W Passiv                                                                   | 15,00 €           |
| Endstufe 2 x 150 W                                                                          | 24,00 €           |
| Endstufe 2 x 300 W                                                                          | 29,00 €           |
| Endstufe 2 x 600 W                                                                          | 39,00 €           |
| Weitere Geräte (Video,- Konferenztechnik, Dolmetscheranlagen) auf Anfrage                   |                   |
| Ab 2. Tagesmiete 20 % Nachlass (nur für Technik)                                            |                   |

|                                                                                                                                                                          |        |          |
|--------------------------------------------------------------------------------------------------------------------------------------------------------------------------|--------|----------|
| Das professionelle Digital-Tonstudio im Hause ist mit der Bühne im Festsaal verkabelt (auch für Großorchester-Aufnahmen, 32 Spuren gleichzeitig, Sichtkontakt per Video) | Stunde | 115,00 € |
| Toningenieur im Studio / Kameramann / Stunde                                                                                                                             |        | 56,00 €  |
| Ton- Videotechniker, Bühnenberteuerung / Stunde                                                                                                                          |        | 56,00 €  |
| Ton / Bühnen / Kameraassistent / Stunde                                                                                                                                  |        | 40,00 €  |
| Aufbau / Arbeitseinheit pro Person: 15 Min.                                                                                                                              |        | 16,50 €  |
| Aufbau, Test, Übergabe, Abbau, Betreuung Bühne, Licht & Ton                                                                                                              |        | 56,00 €  |
| Videotechnik, Videoteam auf Anfrage                                                                                                                                      |        |          |

Weitere Geräte (Video,- Konferenztechnik, Dolmetscheranlagen) auf Anfrage  
 Ab 2. Tagesmiete 20 % Nachlass (nur für Technik)  
 Video- und Tonmitschnitt, Videoteam auf Anfrage.  
 An Sonn- und Feiertagen sowie Nachts (ab 20 Uhr) auf Personalkosten 25 % Zuschlag.  
 Sondervereinbarungen nach vorheriger Absprache.  
 Es gelten unsere Allgemeinen Geschäftsbedingungen, die wir Ihnen gerne auf Anfrage zusenden.  
 Der Mieter haftet für während der Mietzeit entstandene Schäden oder Verluste.  
 Reparaturen werden ausschließlich durch unsere Firma durchgeführt.  
 Es gelten nur schriftliche Vereinbarungen.  
 Die Preise inklusive 19% ges. MwSt.  
 Für weiteren Fragen stehen wir Ihnen gerne zu Verfügung.

Peter Lang  
 Artist Studio im Künstlerhaus

Steuer-Nr.: 145 / 162 / 80159 Finanzamt München III  
 Bankverbindung: SEB Bank München, Ktnr.: 1718894900 Blz.: 700 101 11  
 BIC-CODE ESSEDE 5 F 700 IBAN CODE DE 187 001 0111 1718 894 900

# **Künstlerhaus Catering**

## **food & beverage**

## CONTENT

|                       |             |
|-----------------------|-------------|
| fingerfood            | page 3      |
| canapés & breads      | page 3      |
| menu drafts           | page 4      |
| flying dinner         | page 5 / 6  |
| buffet drafts         | page 7      |
| rates for conferences | page 8      |
| beverages             | page 9 / 10 |
| staff                 | page 11     |
| contact               | page 12     |



## **FINGERFOOD**

|                                                           |       |
|-----------------------------------------------------------|-------|
| Crusty farmhouse bread with tomatoes, mozzarella & basil  | € 3.5 |
| Cream cheese with coarse bread and marmelade of figs      | € 3.0 |
| Pink Roastbeef on olivebread                              | € 4.5 |
| Stained wild salmon with orangemayonnaise and chervil     | € 4.0 |
| Antipasto with pesto and Ciabatta bread                   | € 3.5 |
| Tramezzini with dried tomatoes, Rucola & cottage cheese   | € 3.0 |
| Marinated shrimps with cocktailsause and curry whitebread | € 4.0 |
| Saddle of veal with melon and chervil cream cheese        | € 4.5 |
| Prosciutto di Parma with crusty bread and grape chutney   | € 4.5 |

## **CANAPÉS & BREADS**

|                                                       |       |
|-------------------------------------------------------|-------|
| Smoked duck breast with orangefilets                  | € 3.8 |
| Serrano ham with pickled mustardfruits                | € 3.5 |
| Prosciutto di Parma with figs                         | € 3.8 |
| Smoked whitefish on cucumberstrips                    | € 3.5 |
| Shrimps of the Northern Sea topped with cocktailsauce | € 3.5 |
| Trout filet with horseradish                          | € 3.8 |
| Graved salmon with chutney of mustard                 | € 4.0 |
| Gorgonzola cheese with pear chunks                    | € 3.5 |
| Tête de moine                                         | € 3.8 |
| Bavarian mountain cheese with Kumquat– chutney        | € 4.0 |
| Cream cheese with pistachio                           | € 3.5 |
| Mozzarella with tomatoes and basil                    | € 3.5 |
| Anitpasto with pesto of basil                         | € 3.5 |

## **MENU DRAFTS**

### **Menu 1**

€ 29.5 each

Creamsoup of leeks with Carpaccio of salmon

Aromated roasted poulard breast with glacèd carrots and walnut dumplings

White chocolatemousse with chutney of pears and redwine

### **Menu 2**

€ 33.0 each

Zanderfilet with cucumber- spaghetti and chili- Foccacia

Medaillon of pork filet in white Balsamicofoam and snow peas

Caramelised lemon tart on pistachio pesto

### **Menu 3**

€ 46.5 each

Quail breast in Hoi Sin Sauce topped on Thai-spinach salad

Creamsoup of saffron with scallop and champagne

Fillet of beef medallion with chard and sojashallots

Parfait of roasted almonds with applechutney and honey

### **Menu 4**

€ 49.5 each

Praline of goat cheese with pretzel sticks and two types of parsley

Beef de tatar with quail fried egg and cressbread

Sorbet of basil with meringue und Physalis

Fillet of sea bass with creamy leek and potato Gnocchi

White chocolatemousse with orangecookies

## **FLYING DINNER**

*Dishes will be served Butler – style*

### **Draft 1**

€ 31.5

Choice oh Sushi, ginger and wasabi

Sake Maki (salmon), Tekka Maki (tuna), California Maki (surimi & avocado)

Mini beef burger with thyme, marinated cucumber and mustard shallots sauce

Smoked duck breast with orange- mayonnaise

Satè of pork filet with sesame

Praline of goat cheese with Rucola and peppers

Taco of tuna with Guacamole and coriander

Praline of salmon with Papaya- chutney and crunchy rice

Gnocchi with dried tomatoes and Parmigiano

Black tea Crème Brûlée

Mangoshooter with Kombucha

## **FLYING DINNER**

*Dishes will be served Butler – style*

### **Draft 2**

€ 48.5

Carpaccio of rabbit with quail salad and Balsamico- reduction

Duckliverparfait on pears and pink pepper

Praline of monkfish on algae salad with chilibrad and caviar

Cornetto of stewed vegetables with gambas and Rucola

Pickled halibut with straw of leek and potato- olive mash

Pink saddle of veal with prunes, vegetables and rice

Home- made Ravioli with Manchego cheese sauted in artichoke

Praline of austrian „Sachertorte“ with apricot- chutney

Cupcake of black teá with milk- ice- cream and brown sugar

## **BUFFET DRAFTS**

### **Buffet I**

€ 33.5 each

Choice of bread topped with delicious dips and butter

Stained salmon with beet root and horseradish

Salad of mini Penne with Zucchini, capers und pickled tomatoes

A glass of Caesars Salad with croutons, Parmigiano and anchovies

Crispy poulard breast with crunchy Wok vegetables, lemongrass and aromated rice

Pickled halibut with honey foam, ginger spinach and a choice of potatoes

Ricotta ravioli with galcèd pineapple and leek

Praline of bitter chocolate with Brandy and whip cream

Tiramisu of Bavarian Weißbier with berries and almonds

### **Buffet II**

€ 39.5 each

Choice of bread topped with delicious dips and butter

Marinated raw tuna with brown sugar and Thai mango

Bavarian snack platter in a glass with Bavarian sausages (Landjäger), radish and parsley

Carrot- ginger soup with crab chips

At the Buffet carved pink Roastbeef with potato- ghoatchese-gratin and mixed vegetables

Zander with cabbage and sauce of champagne

Truffled Gnocchi with dried tomatoes and braised lettuce

Licorice Crème Brûlée on saffronfruits

Mini Applestrudel with creamy vanilla ice cream and foam of sour cherries

## **RATES FOR CONFERENCES** (starting from 10 people)

**Full day (f.ex. 9a.m. – 6p.m.)** € 49.0

4 cups of coffee or tea

4 drinks a person

Mineralwater still and sparkling 0,20 l

Apple and Orangejuice 0,20 l

Coca Cola and Cola light 0,20 l

Before noon: 1 tasty Minisandwich or buttered Brezel

Lunch: 3-course menu or starting from 30 people: Buffett

Afternoon: choice of pastry or 1 piece of cake

**half day (f.ex. 9 a.m. – 1p.m. or 1p.m. – 6p.m.)** € 14.5

2 cups of coffee or tea

2 drinks a person

Mineralwater still and sparkling 0,20 l

Apple and Orangejuice 0,20 l

Coca Cola and Cola light 0,20 l

Selectable: 1 tasty Minisandwich or buttered Brezel or a choice of pastry or cake

### **Extras**

Freshly squeezed fruitjuices liter € 12.5

Vegetablesticks with Ricotta – tomatoes dip apiece € 4.0

Mixed fruit basket apiece € 2.5

Strawberry- Joghurt Lassi with fruitsugar liter € 12.5

Baguettes with Ham and Salami each € 4.0

## **BEVERAGES**

### **prosecco & champaign**

|                            |        |
|----------------------------|--------|
| Prosecco Saccheto 0,75 l   | € 29.5 |
| Moet & Chandon 0,75 l      | € 69.0 |
| Moet & Chandon rose 0,75 l | € 86.0 |
| Veuve Clicquot Brut 0,75 l | € 74.0 |

### **beers**

|                             |       |
|-----------------------------|-------|
| Augustiner beer 0,50 l      | € 3.5 |
| An alcoholic beer 0,50 l    | € 3.5 |
| Augustiner whitebeer 0,50 l | € 3.5 |

### **softdrinks**

|                                            |       |
|--------------------------------------------|-------|
| Adelholzener water 0,75 l                  | € 5.9 |
| Granini orangejuice 0,20 l                 | € 2.9 |
| Granini applejuice 0,20 l                  | € 2.9 |
| Granini black currant juice 0,20 l         | € 2.9 |
| Granini maracuja juice 0,20 l              | € 2.9 |
| Bionade elderberry, ginger, Litschi 0,33 l | € 3.4 |
| Coca Cola / light 0,20 l                   | € 2.9 |
| Tonic Water 0,20 l                         | € 2.9 |
| Bitter Lemon 0,20 l                        | € 2.9 |
| Red Bull/ sugarfree                        | € 3.8 |
| Carpe Diem Kombucha Classic 0,25 l         | € 4.2 |

## BEVERAGES

### hot drinks

|                  |       |
|------------------|-------|
| Cafe Creme       | € 2.8 |
| Cappuccino       | € 2.9 |
| Coffee with milk | € 3.5 |
| Espresso         | € 2.1 |
| Double Espresso  | € 3.8 |
| Latte macchiato  | € 3.3 |
| Choice of tea    | € 3.8 |

### whitewine

|                                                                   |                                     |
|-------------------------------------------------------------------|-------------------------------------|
| 2008 Muscadet de Sèvre et Maine sur Lie AC<br>Château la Perrière | 0,1 € 2.6 - 0,2 € 4.9 - 0,75 € 16.9 |
| 2008 Riesling<br>Rheinhessen/J. Dreissigacker                     | 0,1 € 3.5 - 0,2 € 6.9 - 0,75 € 23.5 |
| 2008 Grüner Veltliner Strassertal<br>Kamptal / H. Topf            | 0,1 € 2.9 - 0,2 € 5.9 - 0,75 € 19.8 |
| 2008 Chablis AC<br>M. Laroche                                     | 0,1 € 4.3 - 0,2 € 8.5 - 0,75 € 28.5 |

### redwine

|                                                           |                                     |
|-----------------------------------------------------------|-------------------------------------|
| 2008 Merlot<br>Languedoc/Domaine Laroche                  | 0,1 € 2.6 - 0,2 € 4.9 - 0,75 € 16.9 |
| 2006/07 Minervois Syrah-Carignan<br>Languedoc/G. Bertrand | 0,1 € 3.5 - 0,2 € 6.9 - 0,75 € 23.5 |
| 2007/08 Blaufränkisch Johanneshöhe<br>Burgenland/Prieler  | 0,1 € 3.8 - 0,2 € 7.5 - 0,75 € 24.5 |
| 2006/07 Spätburgunder Qba<br>Pfalz/F. Becker              | 0,1 € 3.8 - 0,2 € 7.5 - 0,75 € 24.5 |

## **STAFF**

to assure that your event will be unforgettable, we will proceed with an excellent crew, already starting by planning your event.

We work only with our own staff, that is exclusively trained and qualified. We particularly appreciate well-groomed appearances and excellent manners.

### **Arrangement of service staff**

|               |                             |
|---------------|-----------------------------|
| Buffet        | up to 30 guest/ staff of 25 |
| Menu          | up to 20 guest/ staff of 15 |
| Flying Buffet | up to 25 guest/ staff of 20 |
| Small dishes  | up to 35 guest/ staff of 30 |

**After midnight we charge € 25.0 per starting hour for every staff member.**

## CONTACT

To check back, for changes or further informations, please let us help you out.

Matthias Meyer  
managing director

**eat. GmbH**  
Dornacherstraße 3d  
85622 Feldkirchen

Tel.           089 930 946 0  
Fax.           089 930 946 20  
Mail.          mm@eat-catering.com

